

# LAND LEVELING GPS SYSTEM

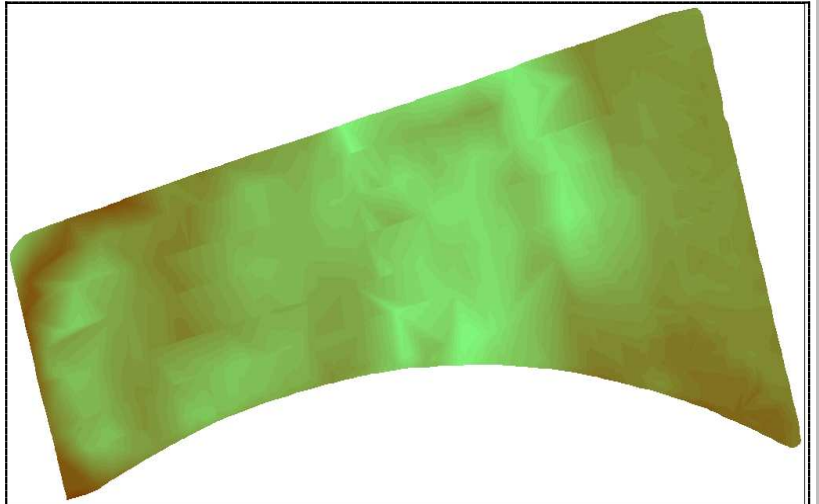
## Technical and commercial information **Model LL5**

Your field has some hole and is not perfect leveled?

After rain, water stay for long time with big damage for your young plants?

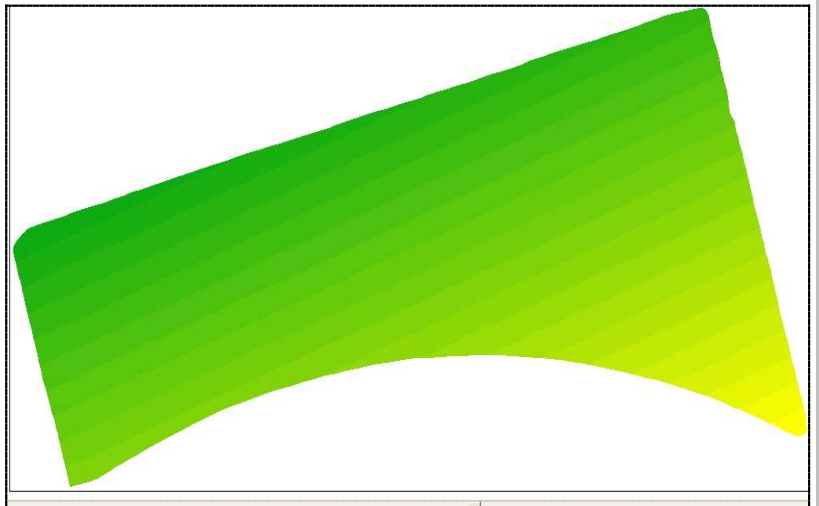
In the spring the snow remain in the hole and you must wait days before start spring works?

You have to waste some water for irrigation?



Now, the solution is in your hand!

Level your field in quickly, easy e cheap way using high technology.

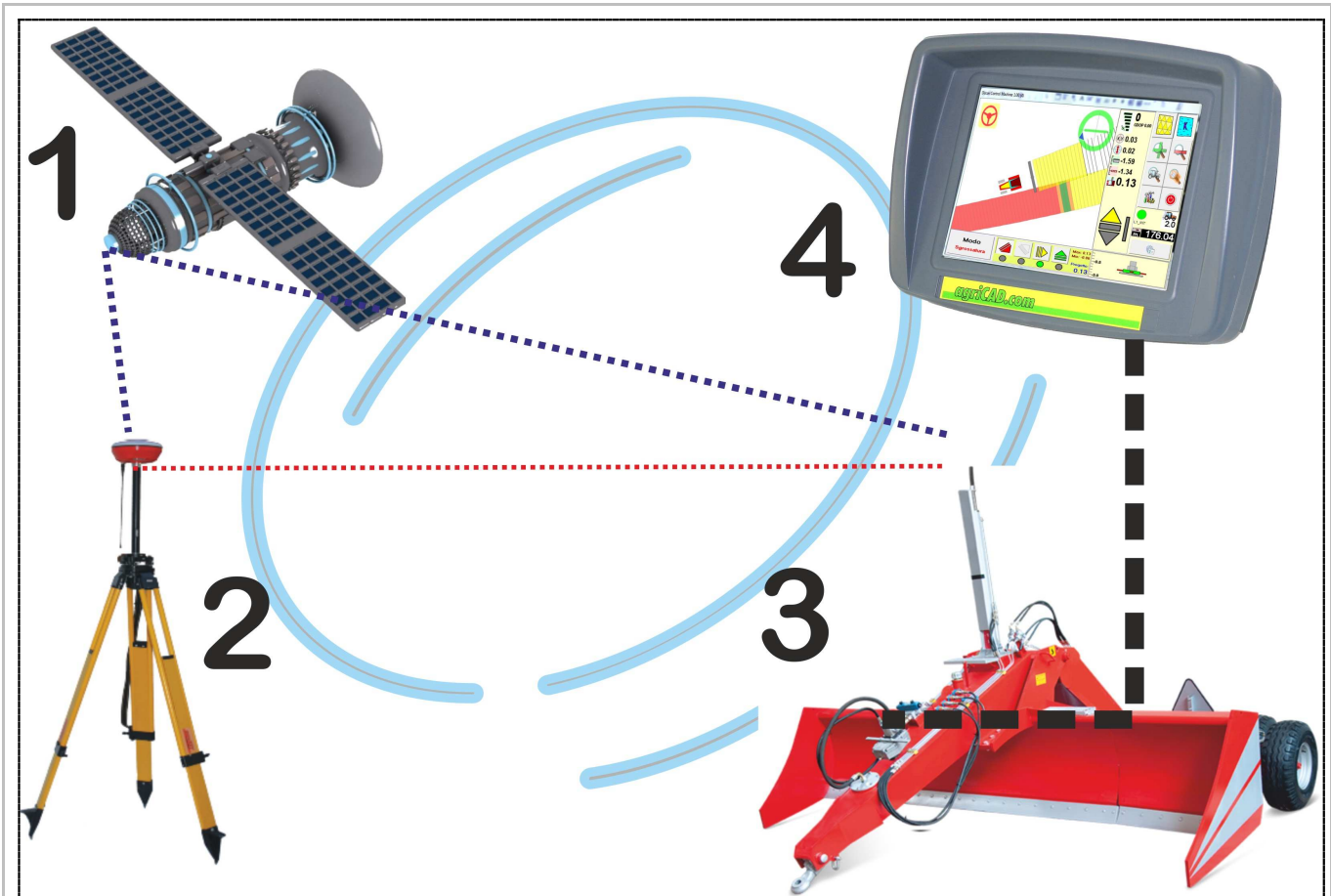


Improve now your production. Start to use new technology for a better agriculture and improve your profit



**GPSKIT srl**

Viale della Tecnica, 34 - 37064 Povegliano Veronese - Verona - Italy  
Tel - 0039 337 486191 0039 334 6033178 - Fax 0039 045 2077929



## System Component:

- 1 - Satellite transmission
- 2 - GPS base Station in the field
- 3 - Land Levelling Machine
- 4 - Computer on the Tractor, to manage the land Leveling Machine.

**GPSKIT srl**

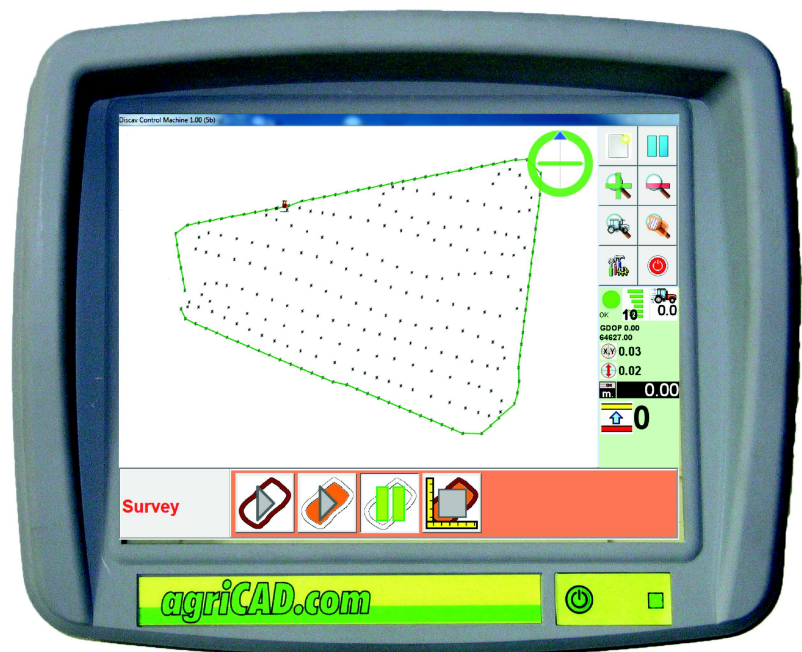
Viale della Tecnica, 34 - 37064 Povegliano Veronese - Verona - Italy  
Tel - 0039 337 486191 0039 334 6033178 - Fax 0039 045 2077929



## How the System Work

First, with the computer on the tractor you take a survey of the elevation.

After the survey, the system show all elevation point of the field.

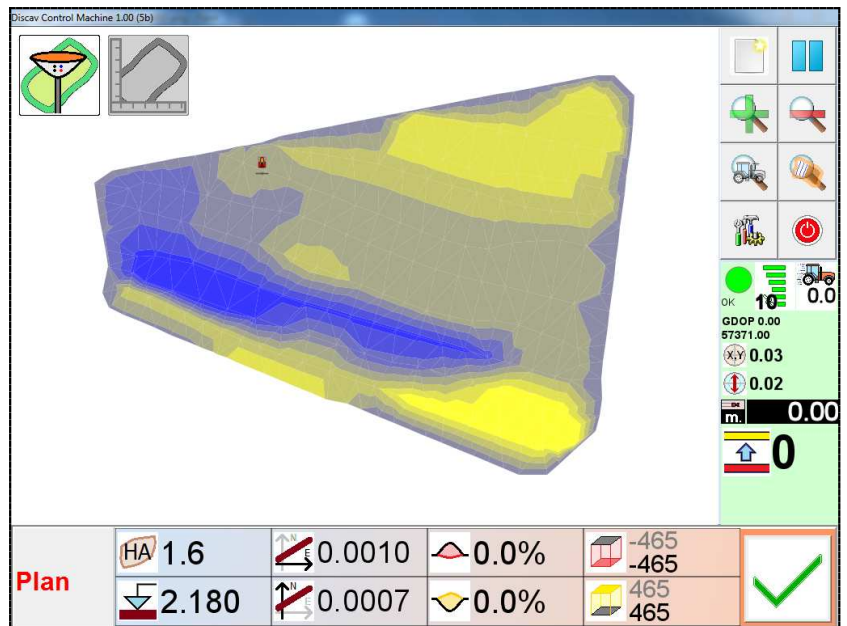


### **GPSKIT srl**

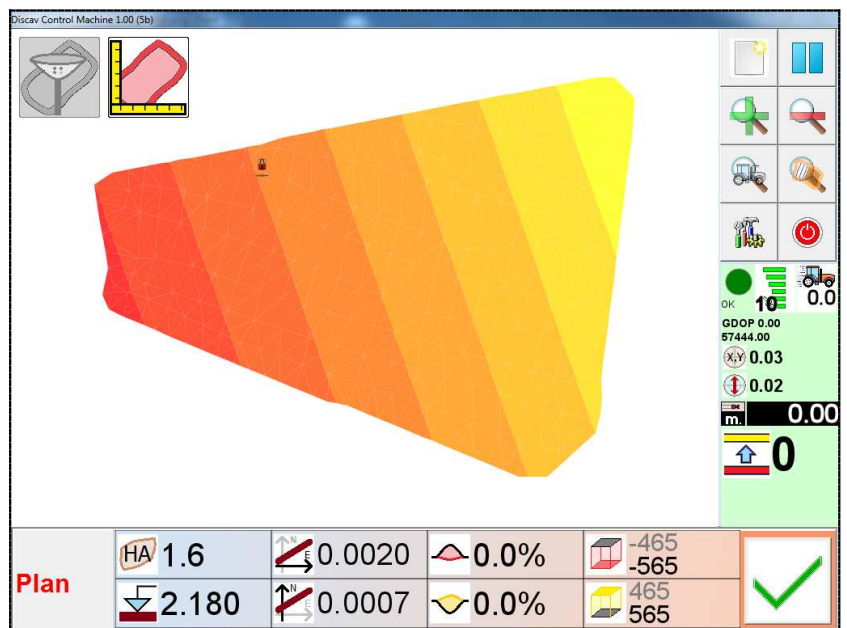
Viale della Tecnica, 34 - 37064 Povegliano Veronese - Verona - Italy  
Tel - 0039 337 486191 0039 334 6033178 - Fax 0039 045 2077929



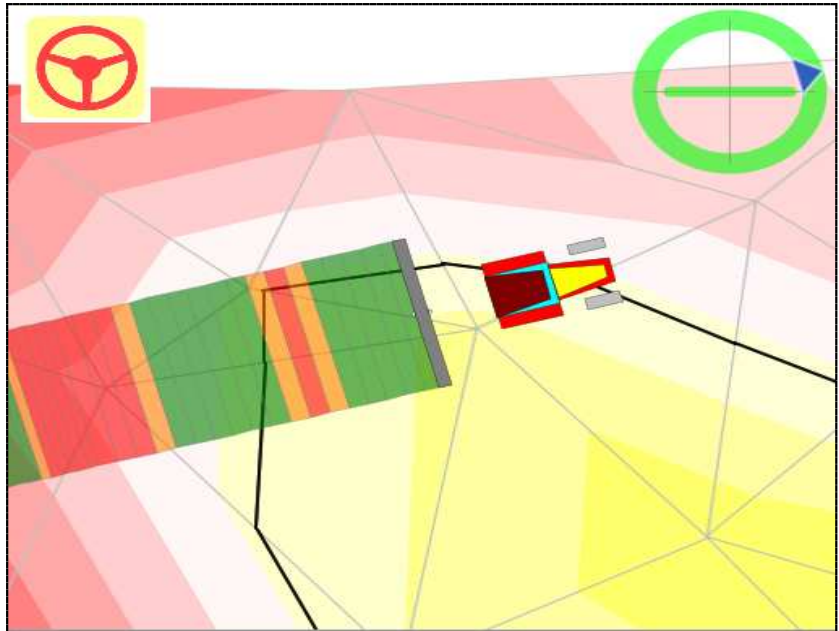
And the system show the hole and high area with different colours.



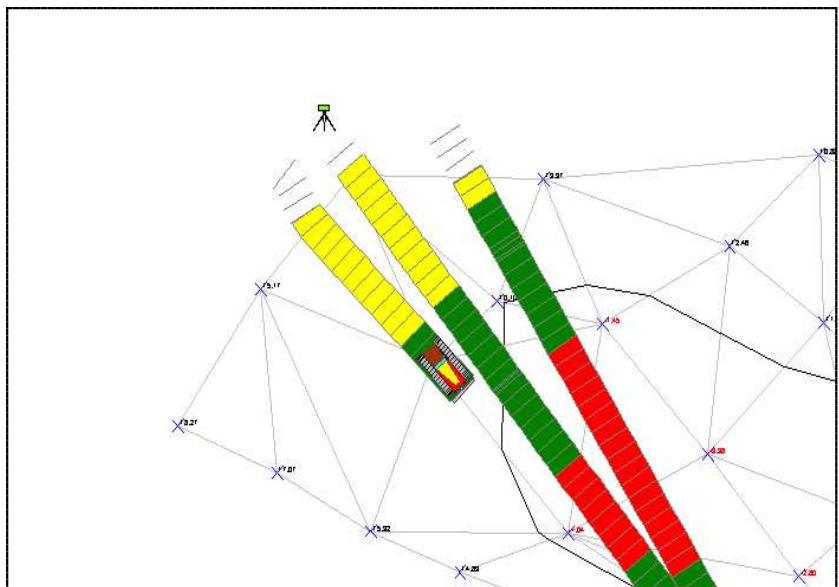
And automatically show the right plan in order to make the cheapest work in the land and at the same time don't create a damage to the agrarian soil.



During works, you can see exactly where you are and where take and move material.



The system show how the blade is working.



At the bottom of panel, you can see the distance between the blade and the project plan. In the right side you can change in continuous the **OFFSET** of the project plan WITH AN ACCURACY OF 5 mm..





## THE GPS HARDWARE

GPS BASE STATION



1 antennas to be mounted on GRADER BLADE.



Radio antenna on tractor



COMPUTER touch screen inside tractor.



**GPSKIT srl**

Viale della Tecnica, 34 - 37064 Povegliano Veronese - Verona - Italy  
Tel - 0039 337 486191 0039 334 6033178 - Fax 0039 045 2077929

Joystic with all function to manage the blade also to up and down blade step by step setting by software.



**AUTO & SETTINGS**

Multifunctional Oil Valves.



### **GPSKIT srl**

Viale della Tecnica, 34 - 37064 Povegliano Veronese - Verona - Italy  
Tel - 0039 337 486191 0039 334 6033178 - Fax 0039 045 2077929



## THE LAND LEVELING MACHINE



The land leveling machine allow you to level in quickly way large fields with high efficiency.



The group of wheels in the rear press in the right way the ground moved and give to the machine an high stability.



You can close wheels and blade in order to transport the machine on the urban roads.

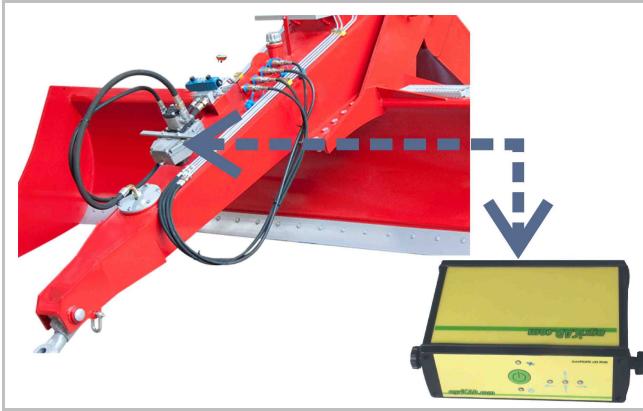


A strong steel structure allows you to use medium or big size tractors.

**GPSKIT srl**

Viale della Tecnica, 34 - 37064 Povegliano Veronese - Verona - Italy  
Tel - 0039 337 486191 0039 334 6033178 - Fax 0039 045 2077929





The Hydraulic system, driven by and high speed electronic processor, allow you to manage the blade with an high accuracy.