



**Explore more with TrueView GO:  
Handheld Scanning in two  
versions, 116S and 132S.**

GeoCue brings the latest in handheld scanning technology with the TrueView GO product range. The TrueView GO is your ultimate tool for flexible, accurate surveying, capable of scanning indoor, outdoor, and subterranean environments, making complex scanning tasks as simple as walking through your site.



## The TrueView GO Easily Captures Reality With Every Step You Take

The TrueView GO, from GeoCue, is the ultimate handheld mapping system designed for effortless indoor and outdoor reality capture and detailed 3D mapping.

Equipped with either 16 or 32 channels, three high-resolution 5MP RGB cameras, and an advanced 3D LiDAR & Imagery scanner, this device transforms complex environments into accurate digital twins with the ease of a stroll.

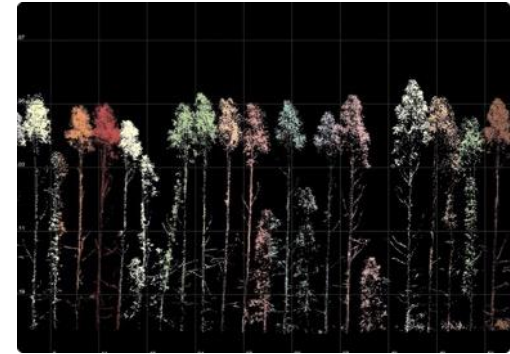
## Featured Applications



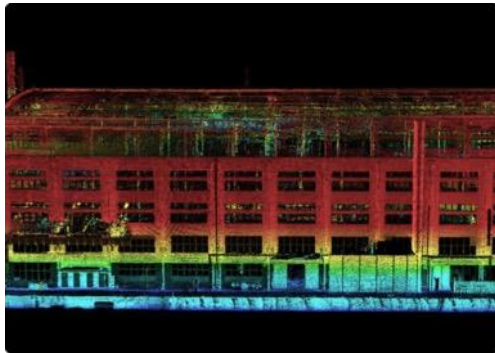
AEC (Architecture, Engineering,  
Construction)



Heritage Conservation



Forestry



Scan to BIM



Facility Management



Underground Mining



**NEW!**

## The TrueView GO 116S Easily Captures Reality With Every Step You Take

Introducing the TrueView GO 116S by GeoCue, a handheld mapping system for seamless indoor and outdoor reality capture and high-definition 3D mapping. This state-of-the-art device features 16 channels, three 5MP high-resolution RGB cameras, and a sophisticated 3D LiDAR & Imagery scanner, easily converting complex environments into precise digital twins.



### Ask About TrueView GO FLEX

Process your TrueView GO 116S with convenient plans. Choose between **FLEX** or **Traditional**.

This innovative sales model brings flexibility and affordability to the TrueView GO 116S by providing users the opportunity to acquire the handheld scanner at an attractive price while introducing a simplified and efficient yearly subscription model for LP360 software.

# TrueView GO 116S Specs



Specification	Value	
Data Collection	LiDAR, Imagery, GNSS, and SLAM	
Laser Scanner	Survey Grade, Class 1 eye safe laser @ 905 nm	
LiDAR Range -	0.05 to 120 m	
LiDAR Range - Usable	80 m @ 10% Reflectivity (channels 5 to 12) 50 m @ 10% (channels 1 to 4, 13 to 16)	
LiDAR Beams/Returns	16/2	
LiDAR FOV (Horizontal)	270°	
LiDAR FOV (Vertical)	(30) (-15° to +15°)	
Pulse Repetition Rate	320 Khz	
System Performance	Absolute accuracy: H: < 5 cm RMS V: < 5 cm RMS	Relative accuracy: <1 cm
Camera Sensor	Three 5 MP cameras (15 MP)	
Camera FOV	210° x 170°	
System Operation Temperature Range	-20° to 50° C	
Mass	1.9 kg (including RTK and battery)	
Power Supply	Lithium battery, supports hot-swapping and portable charger	
Working Time from a Single Battery	1 hr	
Data Storage	512 GB	





**NEW!**

## Step Up Your 3D Mapping with the Upgraded TrueView GO 132S's Enhanced Point Density for More Detailed 3D Models.

Introducing the TrueView GO 132S by GeoCue, an upgraded handheld mapping system for seamless indoor and outdoor reality capture and high-definition 3D mapping. This state-of-the-art device features 32 channels, three 5MP high-resolution RGB cameras, and a sophisticated 3D LiDAR & Imagery scanner, easily converting complex environments into precise digital twins.



### Ask About TrueView GO FLEX

Process your TrueView GO 132S with convenient plans. Choose between **FLEX** or **Traditional**.

This innovative sales model brings flexibility and affordability to the TrueView GO 132S by providing users the opportunity to acquire the handheld scanner at an attractive price while introducing a simplified and efficient yearly subscription model for LP360 software.

# TrueView GO 132S Specs



Specification	Value	
Data Collection	LiDAR, Imagery, GNSS, and SLAM	
Laser Scanner	Survey Grade, Class 1 eye safe laser @ 905 nm	
LiDAR Range -	0.05 to 120 m	
LiDAR Range - Usable	80 m @ 10% Reflectivity	
LiDAR Beams/Returns	32/2	
LiDAR FOV (Horizontal)	270°	
LiDAR FOV (Vertical)	40.3°(-20.8° ~ +19.5°)	
Pulse Repetition Rate	320 Khz	
System Performance	Absolute accuracy: H: < 5 cm RMS V: < 5 cm RMS	Relative accuracy: <1 cm
Camera Sensor	Three 5 MP cameras (15 MP)	
Camera FOV	210° x 170°	
System Operation Temperature Range	-20° to 50° C	
Mass	1.7 kg (including RTK and battery)	
Power Supply	Lithium battery, supports hot-swapping and portable charger	
Working Time from a Single Battery	1 hr	
Data Storage	512 GB	

